

### Project Information

For: SAMPLE

### Design Information

	Htg	Clg	Method	Infiltration
Outside db (°F)	37	95	Construction quality	Simplified
Inside db (°F)	70	75	Fireplaces	Semi-tight
Design TD (°F)	33	20		0
Daily range	-	M		
Inside humidity (%)	30	50		
Moisture difference (gr/lb)	7	57		

#### HEATING EQUIPMENT

Make  
Trade  
Model  
AHRI ref  
Efficiency  
Heating input  
Heating output  
Temperature rise  
Actual air flow  
Air flow factor  
Static pressure  
Space thermostat  
Capacity balance point = 42 °F

0 HSPF  
0 Btuh @ 47°F  
0 °F  
1241 cfm  
0.043 cfm/Btuh  
0.0 in H2O

Backup:  
Input = 10 kW, Output = 35108 Btuh @ AFUE

#### COOLING EQUIPMENT

Make  
Trade  
Cond  
Cap  
AHRI ref  
Efficiency  
Sensible cooling  
Latent cooling  
Total cooling  
Actual air flow  
Air flow factor  
Static pressure  
Load sensible heat ratio

0 SEER  
0 Btuh  
0 Btuh  
0 Btuh  
1241 cfm  
0.045 cfm/Btuh  
0.60 in H2O  
0.70

ROOM NAME	Area (ft²)	Htg load (Btuh)	Clg load (Btuh)	Htg AVF (cfm)	Clg AVF (cfm)
BEDROOM 4	207	1628	2030	69	92
B4 ENTRY	116	639	370	27	17
WIC 4	105	1184	648	50	29
HALL	401	1972	1187	84	54
HWIC	62	766	359	33	16
WIC	29	0	0	0	0
E OFFICE	57	1051	500	45	23
OFFICE	207	3232	1898	138	86
ENTRY	105	1238	805	53	36
UP	32	0	0	0	0
LAUNDRY	91	252	651	11	29
HALL 1	108	41	24	2	1
M WIC	135	480	143	20	6
M BATH	85	914	550	39	25

Calculations approved by ACCA to meet all requirements of Manual J 8th Ed.

KITCHEN	210	1815	3463	77	156
LIVING ROOM	224	2504	3496	107	158
DINING AREA	251	2579	3352	110	151
WIC 1	23	0	0	0	0
BEDROOM 1	141	1817	1670	77	75
BEDROOM 3	171	1917	2174	82	98
HALL 3	53	0	0	0	0
LN	8	0	0	0	0
BATH	49	564	589	24	27
BATH 3	62	977	541	42	24
WIC 3	39	1112	315	47	14
BEDROOM 2	155	2482	2728	106	123
Entire House	3122	29163	27493	1241	1241
Other equip loads		6600	4739		
Equip. @ 1.00 RSM			32232		
Latent cooling			13871		
TOTALS	3122	35763	46103	1241	1241

SAMPLE

Calculations approved by ACCA to meet all requirements of Manual J 8th Ed.

## Project Information

For: SAMPLE

Notes:

## Design Information

Weather: Houston Ellington AP, TX, US

### Winter Design Conditions

Outside db 37 °F  
Inside db 70 °F  
Design TD 33 °F

Ventilation Method ASHRAE 62.2-2019

### Summer Design Conditions

Outside db 95 °F  
Inside db 75 °F  
Design TD 20 °F  
Daily range M  
Relative humidity 50 %  
Moisture difference 57 gr/lb

### Heating Summary

Structure 24760 Btuh  
Ducts (R-6.0) 4403 Btuh  
Central vent (139 cfm) 5028 Btuh  
Outside air  
Humidification 1572 Btuh  
Piping 0 Btuh  
Equipment load 35763 Btuh

### Infiltration

Method  
Construction quality  
Fireplaces

Simplified  
air-tight 0

	Heating	Cooling
Area (ft <sup>2</sup> )	2810	3122
Volume (ft <sup>3</sup> )	2810	28101
Air changes/hour	0.13	0.13
Equiv. AVF (cfm)	117	61

### Sensible Cooling Equipment Load Sizing

Structure 24215 Btuh  
Ducts (R-6.0) 3278 Btuh  
Central vent (139 cfm) 3032 Btuh  
Outside air  
Blower 1707 Btuh  
Use manufacturer's data y  
Rate/swing multiplier 1.00  
Equipment sensible load 32232 Btuh

### Latent Cooling Equipment Load Sizing

Structure 6447 Btuh  
Ducts 2079 Btuh  
Central vent (139 cfm) 5345 Btuh  
Outside air  
Equipment latent load 13871 Btuh

**Equipment Total Load (Sen+Lat)** 46103 Btuh  
Req. total capacity at 0.00 SHR 3.8 ton

### Heating Equipment Summary

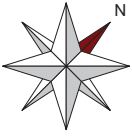
Make  
Trade  
Model  
AHRI ref  
Efficiency 0 HSPF  
Heating input  
Heating output 0 Btuh @ 47°F  
Temperature rise 0 °F  
Actual air flow 1241 cfm  
Air flow factor 0.043 cfm/Btuh  
Static pressure 0.60 in H2O  
Space thermostat  
Capacity balance point = 42 °F

Backup:  
Input = 10 kW, Output = 35108 Btuh, 100 AFUE

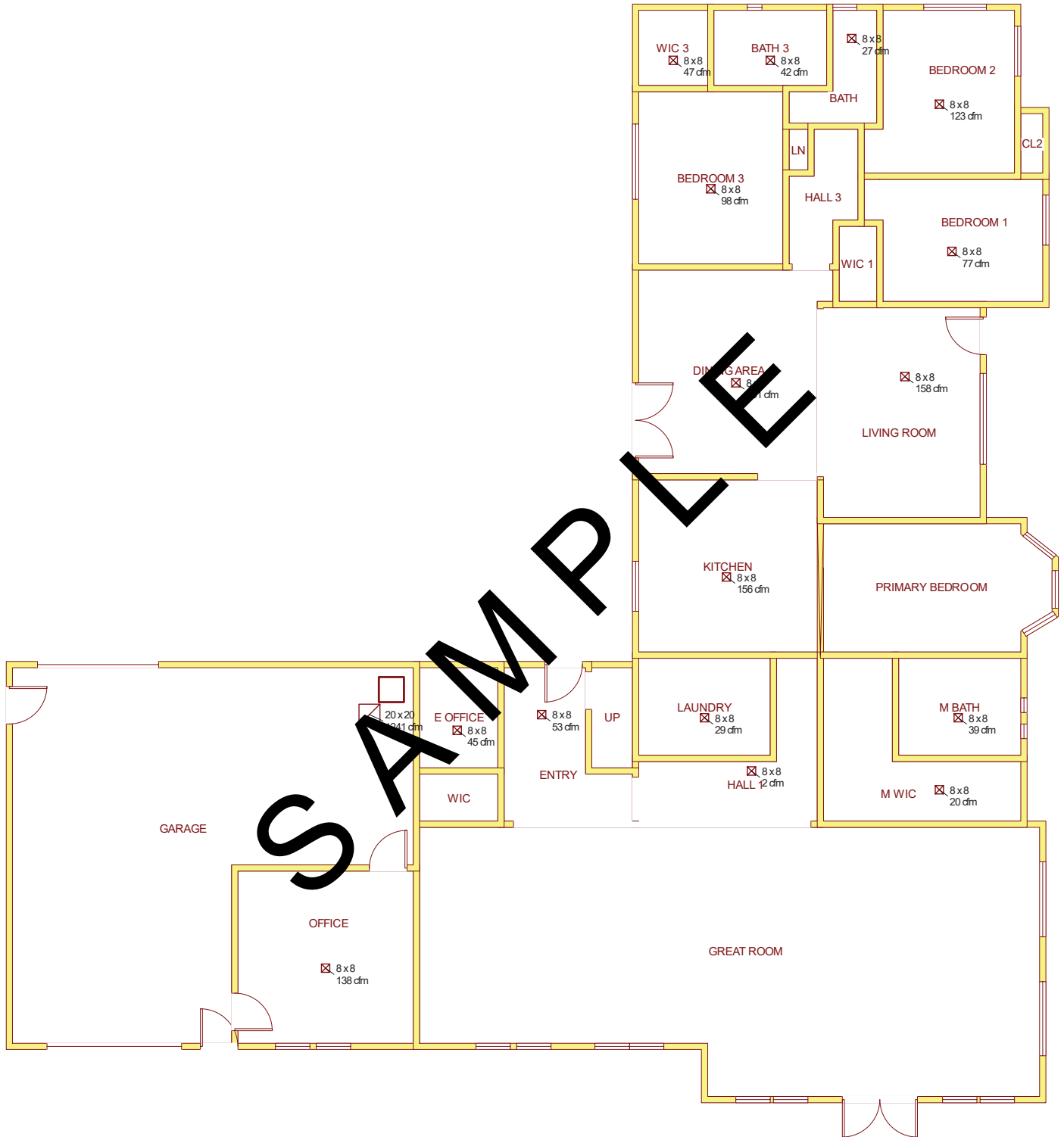
### Cooling Equipment Summary

Make  
Trade  
Cond  
Coil  
AHRI ref  
Efficiency 0 SEER  
Sensible cooling 0 Btuh  
Latent cooling 0 Btuh  
Total cooling 0 Btuh  
Actual air flow 1241 cfm  
Air flow factor 0.045 cfm/Btuh  
Static pressure 0.60 in H2O  
Load sensible heat ratio 0.70

Calculations approved by ACCA to meet all requirements of Manual J 8th Ed.



Main Floor



SAMPLE

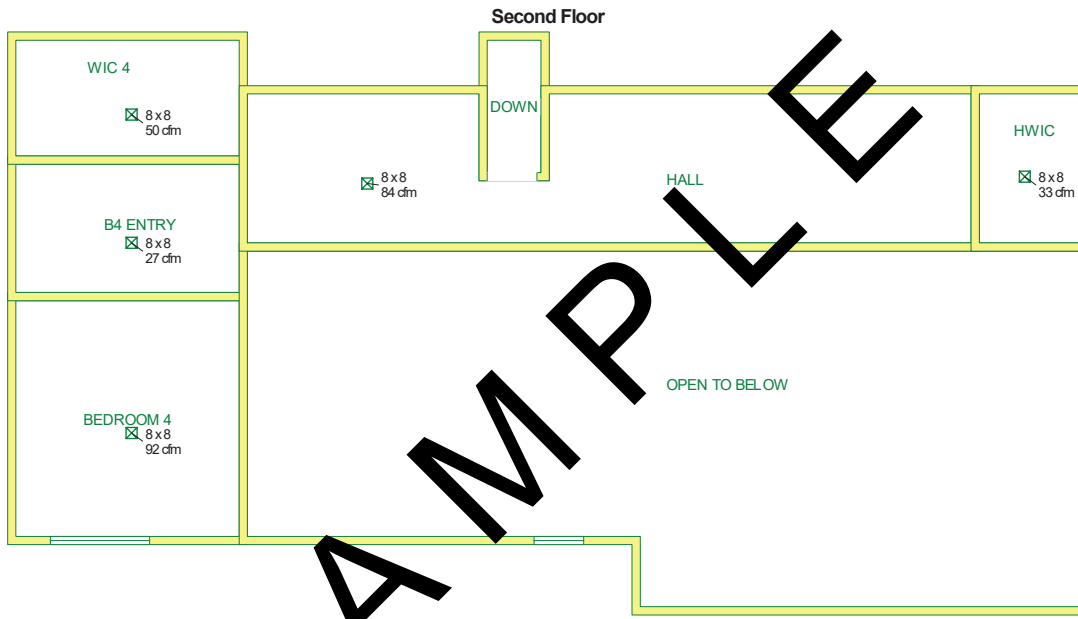
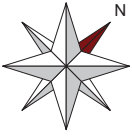
Job #: Sample  
Performed for:

WebReps LLC.

1880 82nd Avenue Suite # 203  
Vero Beach, FL 32966  
Phone: 800-810-3280 Fax: 888 971 2999  
www.webrepswholesale.com manualj@webrepshvac.com

Scale: 1 : 139

Page 1  
Right-Suite® Universal 2024  
24.0.01 RSU16998  
2024-May-06 16:30:59



SAMPLE

Job #: 20085 Pine Island Road  
Performed for:

WebReps LLC.

1880 82nd Avenue Suite # 203  
Vero Beach, FL 32966  
Phone: 800-810-3280 Fax: 888 971 2999  
www.webrepswholesale.com manualj@webrepshvac.com

Scale: 1 : 139

Page 2  
Right-Suite® Universal 2024  
24.0.01 RSU16998  
2024-May-06 16:30:59